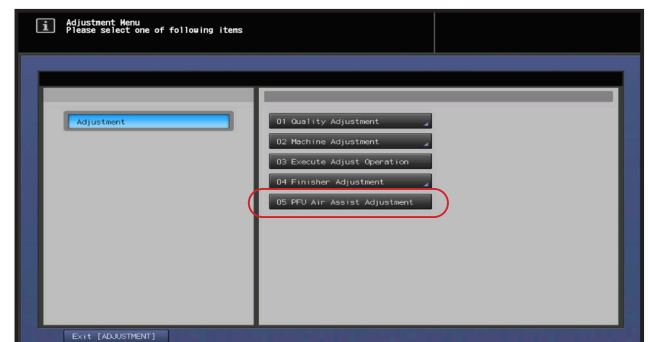


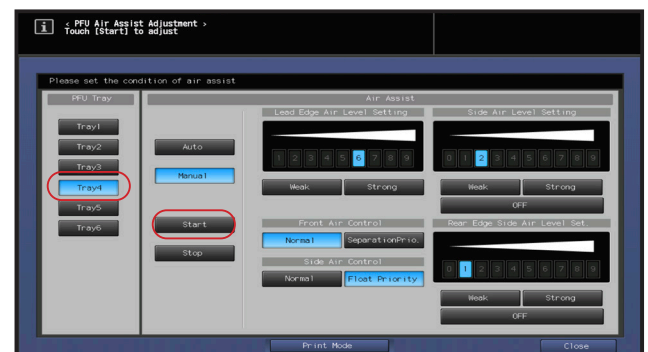
How to view and manually edit the air separation on a loaded media to reduce media jamming on pickup.

1. Enter **Ajustment** Mode
2. Enter **PFU Air Assist Adjustment**
3. Select **Printer Tray**
4. Press **Start**
5. The drawer will engage the **Air assist fans**.
6. Using your **KM Torch** look through the **Air Separation Window**.



NOTE: Sheets should appear to be individually floating /separated.

1. Switch to **Manual**
2. Adjust **Lead Edge** Adjust and/or **Side Air**
3. Select **Strong** to increase separation
4. Select **Weak** to reduce sheet separation



NOTE: Rear edge **Side Air Adjust** is available when a long sheet media / tray is used.

Float Priority is a constant flow of air vs. bursts of air.

