

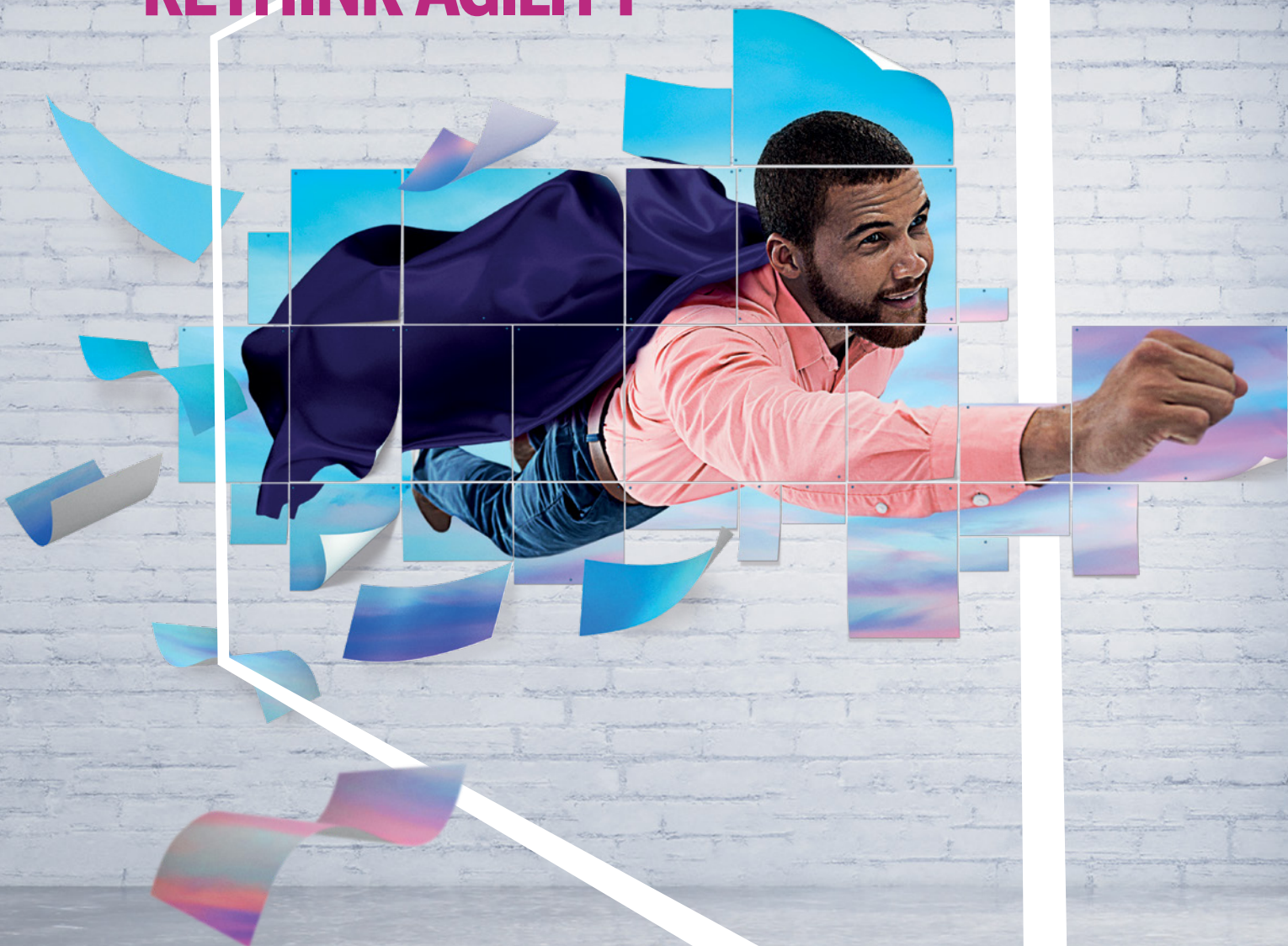


KONICA MINOLTA

AccurioPress  
C7100/C7090

# MAKE A POWERFUL IMPRESSION

## RETHINK AGILITY



Giving Shape to Ideas

# DISCOVER AGILITY THAT CREATES OPPORTUNITY

**More profitable business through a press that works smarter not harder – this was key in the development of AccurioPress C7100 and AccurioPress C7090. With a focus on optimising performance, offering new and advanced print products, and growing the entire business. With the AccurioPress C7100 series, you serve more customers and complete more jobs with innovative technologies that power your success.**

## INTELLIGENT AUTOMATION

By instantly detecting the precise stock you're using, the optional Intelligent Media Sensor IM-101 significantly reduces production time. At the same time, the optional Intelligent Quality Optimiser IQ-501 ensures perfectly consistent colour quality and front-to-back registration on every print in real time. And as there's no recalibrations or inspections mid-run, you'll benefit from improved productivity as well.

## ENHANCED FINISHING

The optional in-line TU-510 4-edge trimming unit cuts, creases and perforates to produce stunning full-bleed trimmed book jackets, imposed cards, business cards, coupons and more. Removing the need for off-line finishing means fewer operator touchpoints for faster and more efficient print runs.

## FLAWLESS QUALITY

Our latest Simitri V toner is eco-friendly and formulated for performance. Fast melting, energy efficient and low maintenance, it reproduces superb quality on a wider range of media up to 400 gsm. Combined with an output resolution of 3,600 dpi equivalent x 2,400 dpi, you will get outstanding results even from the fastest, longest print runs.

## ADVANCED CAPABILITIES

With auto-duplex banners up to 900 mm and the flexibility to handle embossed and textured media, its handling so simple that one operator can run even the most complex projects. So, why not say yes right now to more opportunities that will grow your business!

## EXCEPTIONAL DURABILITY

Reliability drives profitability. Among the new technologies built into the engine are a more durable lubricated drum, double corona wires with automatic cleaning, an optimised paper transport solution, and a double swing registration system for improved paper compatibility and feeding accuracy.





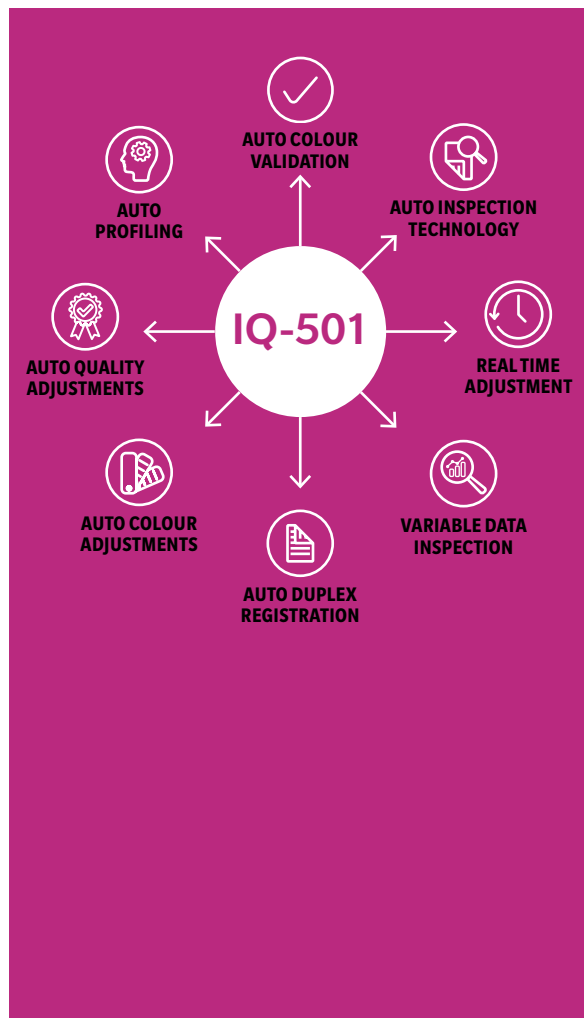
# INNOVATE PRINT

## RETHINK TECHNOLOGY

### Intelligent Quality Optimiser IQ-501\*

The Intelligent Quality Optimiser IQ-501\* takes colour consistency and registration accuracy to the next level. With highly automated image registration and colour control, a closed-loop system that constantly monitors and adjusts printed output, and automated colour calibration and profiling, the IQ-501\* delivers streamlined operator time, reduced print waste, and industry-leading productivity!

\* Optional



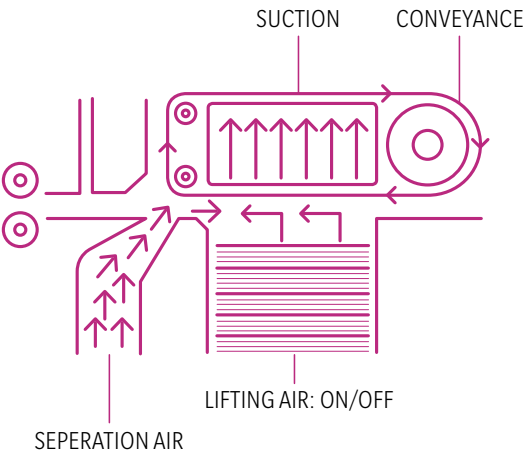
## Simitri<sup>®</sup> V

### Simitri<sup>®</sup> V Toner

Konica Minolta's innovative Toner technology Simitri<sup>®</sup> V gives superb print quality and an offset matte finish. Furthermore it supports the high productivity of AccurioPress C7100 series and it requires a lower fusing temperature which reduces the energy consumption of the system and the impact of the printing process on the paper. Simitri V was designed to easily follow the surface of the paper or substrate to guarantee best possible print quality on embossed, structured or recycled materials.

### S.E.A.D. X Image Processing

Konica Minolta's own advanced colour processing technology of the fifth generation is called S.E.A.D. X, which stands for "Screen-Enhancing Active Digital Process", and combines an array of technical innovations to guarantee truly exceptional colour reproduction at top speed.



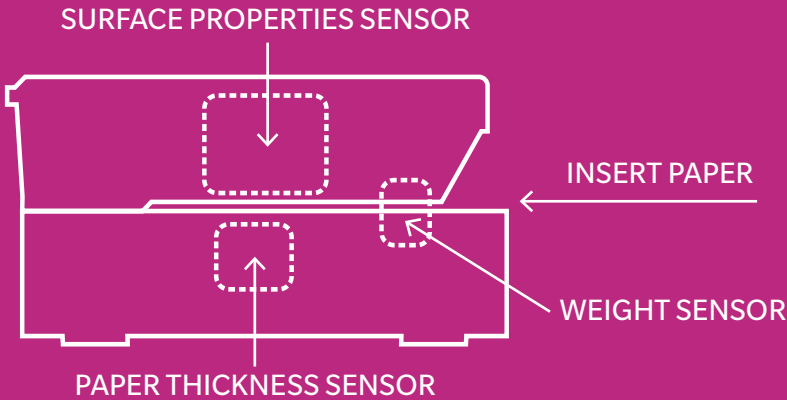
**Vacuum paper feeding**

It is essential for high-volume printers to feed each and every sheet smoothly and precisely through the digital press. To ensure this, Konica Minolta offers professional and intelligent paper feeding for all formats up to 900 mm length that builds upon proven concepts, including a combination of air separation of sheets and suction /vacuum feeding. This ensures smooth paper processing throughout the printing system. For efficient printing on offset preprinted and coated stock as well as under high humidity conditions, an optional heating unit can be added to enhance this precise technology further.

**Intelligent Media Sensor**

The optional media sensor IM-101 automatically detects the type, weight, thickness and surface of each substrate, and proposes the appropriate paper

settings from the catalogue, which makes wrong paper settings a thing of the past avoiding misprints and waste.



# STATE-OF-THE-ART- PRINT-SERVER RETHINK PRODUCTION PRINTING

## THE IC-609 KONICA MINOLTA CONTROLLER

The Konica Minolta IC-609 print controller brings powerful workflow benefits – including 2,400 dpi printing at full rated engine speed, high-speed RIP processing, enhanced accuracy in colour reproduction, colour management functions and full compatibility with print engine on-board job control and editing functions.

## IC-318L EFI FIERY CONTROLLER

Reduce labour costs, cut turnaround times, and minimise errors and paper waste with the advanced job management and workflow automation that the Fiery® IC-318L provides. Streamline your job layout with the Fiery's instant visual preview and advanced make ready capabilities. What's more, supporting industry-leading variable data printing (VDP) formats, the Fiery also produces personalised short-run jobs profitably.

## IC-319 EFI FIERY CONTROLLER

The top-of-the-line Fiery® IC-319 will improve your bottom line with best-in-class processing, outstanding colour and time-saving workflows. If you want the best out-of-the-box colour consistency and accuracy with powerful colour matching, profiling, and automated calibration, look no further! With EFI™ management information systems and web-to-print solutions, the IC-319 eliminates touch points and optimises production; plus it integrates with industry-leading prepress workflow solutions.

## IC-316 CREO CONTROLLER

The Creo® IC-316 external print controller supports perfect variable data printing integration and is the ideal choice for hybrid prepress workflows. Beyond that, the Creo features advanced spot colour profiling, a complete Pantone GOE library, Remote Site Manager status tracking, JDF connectivity, Creo job ticket software, and much more.



# TAKE LEADERSHIP AND RESPONSIBILITY

## RETHINK TOMORROWS BUSINESS

### MADE YOUR BUSINESS

#### Commercial printers

The AccurioPress C7100 series supports you in growing your business and getting the most out of your investment. Its high speed, high productivity and high uptime help you achieve shortest turnaround times, while the great media flexibility with stocks of up to 400 gsm, long sheets of up to 1,300 mm, envelopes and structured media will further enhance the variety of our print offerings. Colour quality issues are a thing of the past as the AccurioPress C7100 includes numerous auto control and adjustment features. What's more, an inspection system can be applied to make sure only impeccable prints leave your shop.

#### In-house print rooms

The AccurioPress C7100 series provides the highest degree of automation and produces quality on the highest level. With its professional inline finishing, you can create ready-made products at the push of a button; and the Intelligent Quality Optimiser IQ-501 makes sure that the print quality is automatically set, monitored and continuously corrected. The versatile media flexibility and high productivity make the AccurioPress C7100 series a solid and lucrative investment for the future.

### DESIGN FOR OUR PLANET

Konica Minolta promotes sustainable development and integrates environmental and social perspectives into its business strategies. You can rely on Konica Minolta products to underpin your green strategy to build your business.

Committed to help prevent global warming, Konica Minolta strives to reduce CO<sub>2</sub> emissions during product manufacture, product distribution, at the sales stage, and during product use – with even stricter targets than demanded by the Kyoto Protocol.



# YOUR ADVANTAGES WITH THE AccurioPress C7100/C7090

## RETHINK PRODUCTION PRINTING

### READY-MADE PRINT PRODUCTS

- 50-sheet booklet making with front trimming and optional creasing, slitting and spine corner forming
- Perfect binding for books of up to 30 mm
- 100-sheet stapling with cutting mechanism
- Automated inline business card and postcard cutting
- Full bleed banners, A3 and A4 posters

### DURABLE PERFORMANCE

#### AccurioPress C7100

- Duty Cycle of up to 1.8 million prints
- Up to 100 A4 colour pages per minute
- Up to 53 SRA3 colour pages per minute

#### AccurioPress C7090

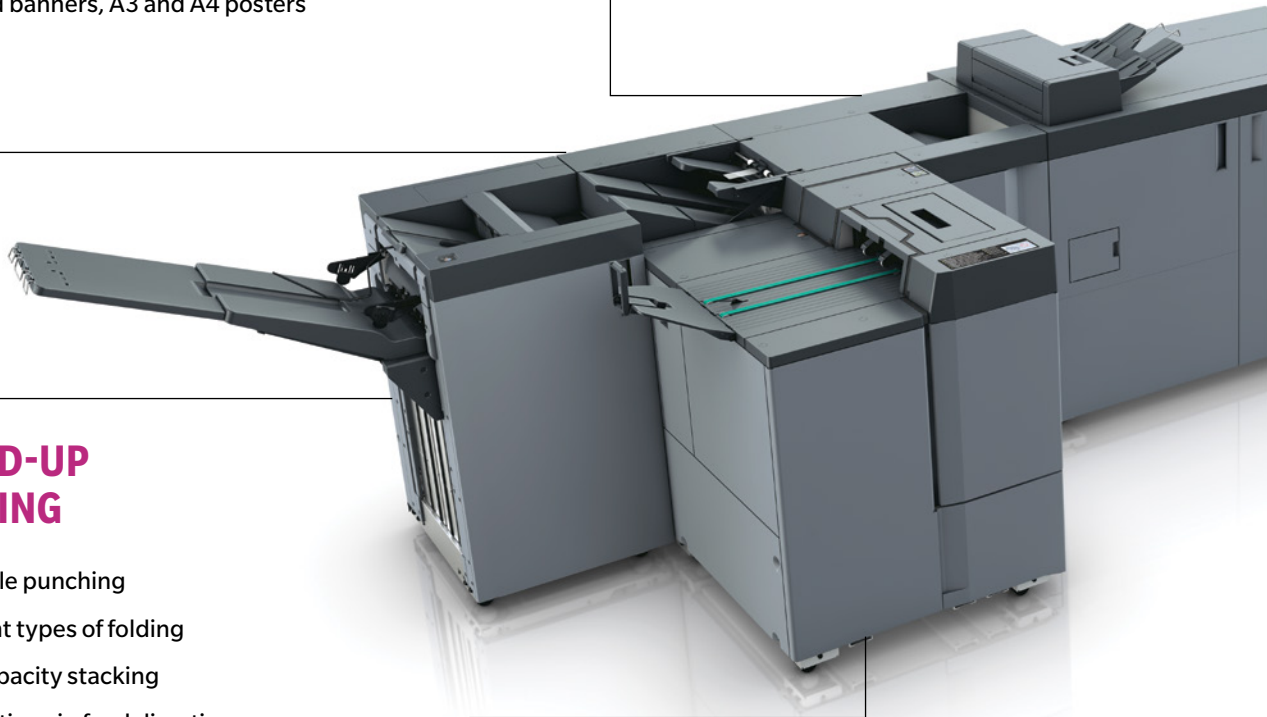
- Duty Cycle of up to 1.62 million prints
- Up to 90 A4 colour pages per minute
- Up to 48 SRA3 colour pages per minute

### GEARED-UP FINISHING

- 2- & 4-hole punching
- 6 different types of folding
- Large-capacity stacking
- 2 Perforations in feed direction, 5 Perforations in Cross feed direction
- Up to 5 Creases downwards or upwards

### SIMPLY EFFICIENT

- Automated engine linearisation
- Automated duplex registration
- Automated profiling
- Real-time adjustments
- Purge function





## HIGHEST RELIABILITY

- Long-life platform, long-lasting parts and consumables
- Accurate front to back registration
- For prints with maximum efficiency
- For lucrative short-run printing

## HIGH-END PRINT CONTROL

- Flexible choice of controller technology: EFI®, CREO® or proprietary Konica Minolta controller
- Integration into hybrid workflows

## EASE OF USE

- Simple paper catalogue settings
- Auto Inspection Technology

## PERFECT IMAGE QUALITY

- S.E.A.D. X  
3,600 x 2,400 dpi x 8 bit resolution
- Simitri V toner technology
- Image density control technology

## SOPHISTICATED MEDIA HANDLING

- Automatic media recognition
- Air-suction feeding technology
- Up to 15,150 sheets paper input capacity
- Up to 11 paper input trays
- Up to 2,300 sheets paper input for long sheets (up to 900 mm)

## COMPREHENSIVE MEDIA PROCESSING

- Up to 400 gsm paper weight in simplex and duplex printing
- Long sheet size of up to 1,300 mm (duplex up to 900 mm )
- Reliable thin paper feeding through air-blow fusing separation
- Envelope printing
- Embossed paper support
- Optional inter-cooler curl eliminator



# 10 GOOD REASONS FOR THE AccurioPress C7100 SERIES



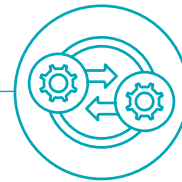
## 1. BUSINESS EXPANSION

Compatible with thin to thick media and superior banner printing capabilities



## 2. INTELLIGENT AUTOMATION

Minimise preparation time with easy and quick setup routines, e.g. for media, colours, registration



## 3. AUTOMATED FINISHING

Many unique inline finishing options to create ready-to-ship booklets, perfect bound books, ring binding, business cards or full bleed banners and so much more



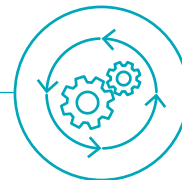
## 4. FAST TURN AROUND

Same high engine performance on all kinds of media combined with closed loop quality control and inspection technology



## 5. NEW PRINT PRODUCTS

Expand what you can offer with textured media, envelope and long sheet duplex printing



## 6. HIGHEST RELIABILITY

Durable design and accurate registration for quality products with minimum waste



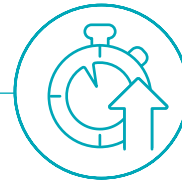
## 7. SUPERB IMAGE QUALITY

Simitri V, high print resolution and Konica Minolta's very own imaging technology guarantee happy customers



## 8. WORRY-FREE OPERATION

Real-time quality control for consistent and faultless print products



## 9. INCREASED UPTIME

Long-lasting consumables, high paper input capacity and dependable productivity secure uninterrupted production



## 10. EASE OF USE

Even novice operators will get very good and consistent results at the tip of a finger

# CONTROLLER AND OPTIONS

## RETHINK THE NEEDS

### FIERY IMAGE CONTROLLER IC-319

|                           |  |
|---------------------------|--|
| Architecture              | External   |
| OS                        | Windows 10   |
| CPU                       | Intel® Xeon 5118   |
| Clock speed               | 2.3 GHz  |
| RAM std                   | 32 GB  |
| HDD                       | 4,5 TB   |
| Page-description language | Adobe PostScript 3; PDF v1.7; APPE v5; PDF/VT-1/-2 v3; PDF/X1a,3,4; PPML v3.0; PCL; Creo VPS |
| Applicable OS             | Windows 8.1/10; Windows Server 2012/R2/2016/2019;<br>Mac OS 10.14-10.15, Mac OS 11           |

### FIERY IMAGE CONTROLLER IC-318L

|                           |  |
|---------------------------|--|
| Architecture              | External   |
| OS                        | Windows 10   |
| CPU                       | Intel i7-6700  |
| Clock speed               | 3.4 GHz  |
| RAM std                   | 16 GB  |
| HDD                       | 1 TB   |
| Page-description language | Adobe PostScript 3; PDF v1.7; APPE v5; PDF/VT-1/-2 v3; PDF/X1a,3,4; PPML v3.0; PCL; Creo VPS |
| Applicable OS             | Windows 8.1/10; Windows Server 2012/R2/2016/2019;<br>Mac OS 10.14-10.15, Mac OS 11           |

### CREO IMAGE CONTROLLER IC-316

|                           |  |
|---------------------------|--|
| Architecture              | External   |
| OS                        | Windows 10   |
| CPU                       | Intel i7-8700  |
| Clock speed               | 3.2 GHz  |
| RAM std                   | 20 GB  |
| HDD                       | 8 TB   |
| Page-description language | Adobe PostScript 3; PDF v1.7; APPE v4.9; PDF/VT-1/-2; PDF/X1a,3,4; PPML v2.2; Creo VPS; AFP; IPDS; JPEG; TIFF (v6, 1bit) |
| Applicable OS             | Windows 8.1/10; Windows Server 2012/R2/2016/2019; Mac OS 10.12-15  |

### KONICA MINOLTA IMAGE CONTROLLER IC-609

|                           |  |
|---------------------------|--|
| Architecture              | Internal   |
| OS                        | Linux  |
| CPU                       | Intel Core i5 6500   |
| Clock speed               | 3.2 GHz  |
| RAM std                   | 16 GB  |
| HDD                       | 2 TB (2 x 1TB)   |
| Page-description language | Adobe PostScript 3; APPE (with UK-220); TIFF v6; PDF 1.7, X-1a, X-3, X-4, VT2; PPML 2.2; PCL 5c; XL; PCL XL; JDF/JMF |
| Applicable OS             | Windows 8.1/10; Windows Server 2012/R2/2016/2019;<br>Mac OS 10.12-15, Mac OS 11                                      |

### OPTIONS

|  |                  |
|--|------------------|
| Internal KM image controller                   | IC-609           |
| Local connection kit                           | EK-612           |
| APPE kit                                       | UK-220           |
| HDD kit  | UK-112           |
| EFI External image controller                  | IC-318L ver. 1.1 |
| EFI Internal image controller                  | IC-319 ver. 1.1  |
| Creo external image controller                 | IC-316 ver. 1.1  |
| Video interface kit                            | VI-515           |
| Card authentication equipment                  | AU-201S          |
| Patlite  | MK-744C          |
| Working table                                  | WT-511           |
| Fusing unit for envelopes                      | EF-108           |
| Option heater                                  | HT-511           |
| Intelligent media sensor                       | IM-101           |
| High end finisher                              | FS-541           |
| Entry finisher                                 | FS-532m          |
| Saddle stitcher for FS-541/532m                | SD-510           |
| Punch for FS-541/532m                          | PK-525           |
| PI mount kit for FS-541/532m                   | MK-732           |
| Post inserter for FS- 541/532m                 | PI-502           |
| Saddle stitcher (50 sheets)                    | SD-506           |
| Saddle stitcher (50 sheets)                    | SD-513           |
| Square fold for SD-513                         | FD-504           |
| Creaser for SD-513                             | CR-101           |
| Slitter for SD-513                             | TU-503           |
| Large capacity stacker                         | LS-507           |
| Carrier for LS-507                             | LC-502           |
| Trimmer unit                                   | TU-510           |
| Creaser for TU-510                             | CR-102           |
| Slitter for TU-510                             | TU-504           |
| Banner unit for TU-510                         | MK-764           |
| Card unit for TU-510                           | JS-507           |
| Creaser (upward convex) for TU-510             | CR-103           |
| Perforation unit FD for TU-510                 | PE-101           |
| Perforation unit CD for TU-510                 | PE-102           |
| Dust box for TU-510                            | MK-765           |
| Folding unit                                   | FD-503           |
| Perfect binder                                 | PB-503           |
| Open stacker                                   | OT-512           |
| Output tray                                    | OT-511m          |
| Turnover relay unit                            | RU-510           |
| Hybrid decurler                                | RU-518m          |
| Humidifier for RU-518m                         | HM-103           |
| Intelligent Quality Optimiser                  | IQ-501           |
| Video interface kit                            | VI-514           |
| Relay conveyance unit                          | RU-702           |
| Paper inspection unit                          | UK-301           |
| Paper inspection upgrade board                 | UK-311           |
| VDP data comparison upgrade kit                | UK-312           |
| 3-Tray Paper feed unit                         | PF-712           |
| 3-Tray Paper feed unit(Scanner)                | PF-713           |
| 3-Tray Paper feed unit(Banner)                 | PF-812           |
| Large capacity tray                            | LU-208           |
| Large capacity tray(Banner)                    | LU-208XL         |
| Multi-bypass tray                              | MB-510           |
| Multi-bypass tray for PF-712/PF-812            | MB-511           |
| Intermediate Conveyance Unit                   | FA-505           |
| Dehumidifier fan heater for -712/PF-713/PF-812 | HT-506           |
| Dehumidifier fan heater for LU-208/LU-208XL    | HT-515/HT-518    |
| Envelope installation kit                      | MK-746           |
| Banner input tray unit                         | MK-760           |
| Banner output tray unit                        | MK-761           |





KONICA MINOLTA

# TECHNICAL SPECIFICATIONS

## RETHINK PRODUCTION PRINTING

### SYSTEM SPECIFICATIONS

|                                  |   |
|----------------------------------|---|
| Resolution                       | 2,400 x 3,600 equiv. dpi x 8 bit  |
| Paper Weight                     | 52–400 gsm  |
| Duplex Unit                      | Non-stack type; 52–400 gsm  |
| Paper sizes                      | 330 x 488 mm<br>330 x 900 mm (max. duplex)<br>330 x 1,300 mm (max. simplex) |
| Paper input capacity             | 15,140 sheets   |
| Main unit dimensions (W x D x H) | 800 x 1,138 x 1,478 mm  |
| Main unit weight                 | 335 kg  |

### PRODUCTIVITY

#### AccurioPress C7100

|                               |           |
|-------------------------------|-----------|
| A4 colour - max. per minute   | 100 ppm   |
| A4 mono - max. per minute     | 110 ppm   |
| SRA3 colour - max. per minute | 53 ppm    |
| SRA3 mono - max. per minute   | 58 ppm    |
| A4 colour - max. per hour     | 5,613 pph |
| A4 mono - max. per hour       | 6,103 pph |

#### AccurioPress C7090

|                               |           |
|-------------------------------|-----------|
| A4 colour - max. per minute   | 90 ppm    |
| A4 mono - max. per minute     | 110 ppm   |
| SRA3 colour - max. per minute | 48 ppm    |
| SRA3 mono - max. per minute   | 58 ppm    |
| A4 colour - max. per hour     | 5,047 pph |
| A4 mono - max. per hour       | 6,103 pph |

- All specifications refer to A4-size paper of 80 gsm quality.
- The support and availability of the listed specifications and functionalities varies depending on operating systems, applications and network protocols as well as network and system configurations.
- The stated life expectancy of each consumable is based on specific operating conditions such as page coverage for a particular page size (5% coverage of A4). The actual life of each consumable will vary depending on use and other printing variables including page coverage, page size, media type, continuous or intermittent printing, ambient temperature and humidity.
- Some of the product illustrations contain optional accessories.
- Specifications and accessories are based on the information available at the time of printing and are subject to change without notice.
- Konica Minolta does not warrant that any prices or specifications mentioned will be error-free.
- All brand and product names may be registered trademarks or trademarks of their respective holders and are hereby acknowledged.

For complete information on Konica Minolta products and solutions, please visit:

**Konica Minolta**  
**Business Solutions New Zealand Ltd**

**Free Call 0800 475 005**  
**[konicaminolta.co.nz](http://konicaminolta.co.nz)**